

MAPS

The three maps we have given you are used for three different purposes. These maps have been designed just to be of help to you, but they are not a legal document and may not be recognized as such.

Map # 1. Lists your 911 numbers, used by police and fire departments, and should be posted in front of your home in large numbers as to be seen at night in case of an emergency.

Map # 2. Lists your Chocorua Ski & Beach Lot number, which are used in the sale of your property, or when you request a sticker for your boat or recreational vehicles.

Map # 3. Lists your Town of Tamworth Tax Lot number, is used by the town and will appear on your tax bills. This will also be used in the sale of your property.

CHOCORUA SKI & BEACH

9 1 1 HOUSE NUMBERS

MOORE
POND

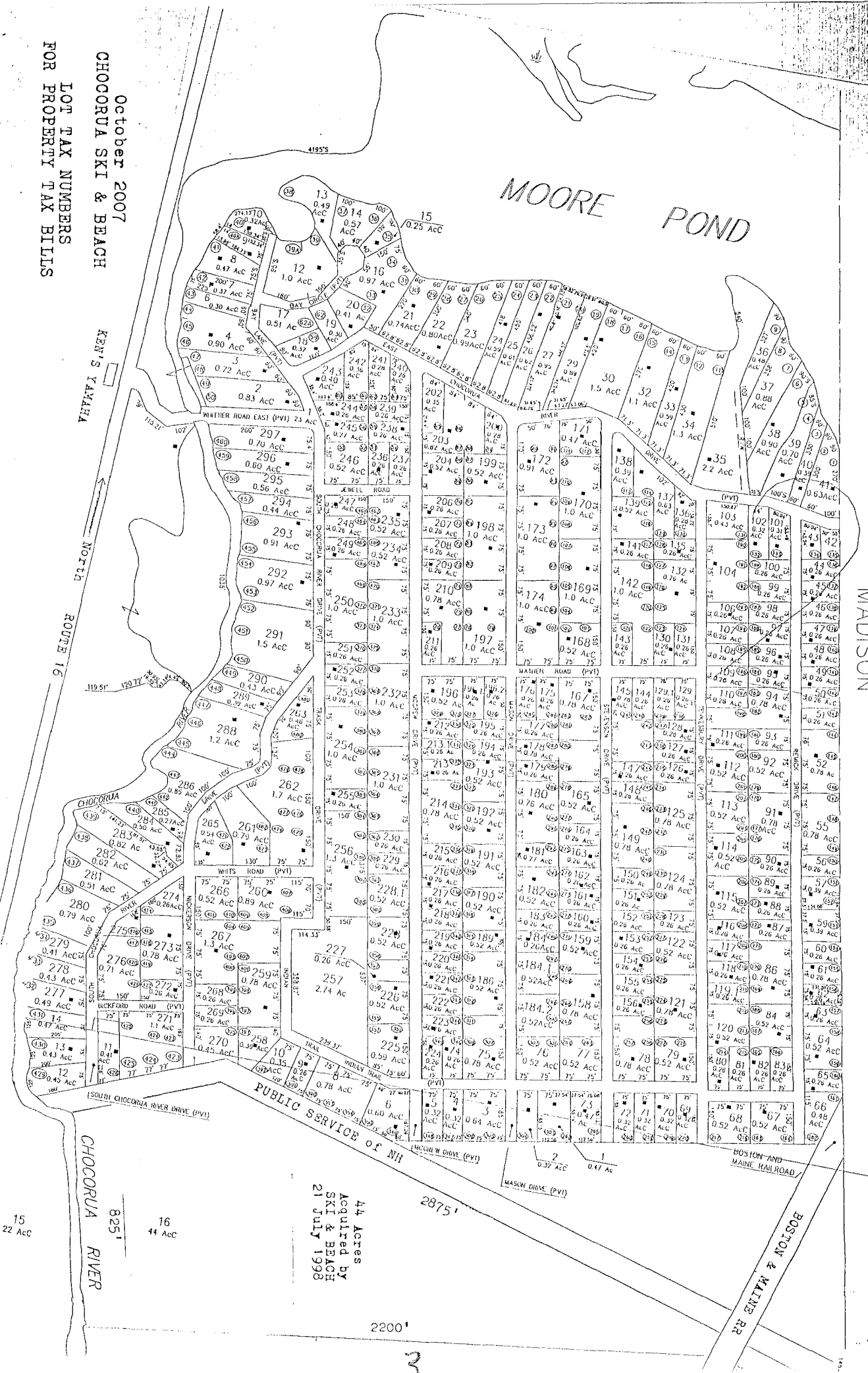


44 Acres
Acquired by
SKI & BEACH
21 July 1998

October 2007
CHOCORUA SKI & BEACH
"911" HOUSE NUMBERS
FOR EMERGENCY SERVICES
FIRE - POLICE - MEDICAL

MAP NOT TO SCALE
LOT LINES/BOUNDRIES
APPROXIMATE

October 2007
 CHOCORUA SKI & BEACH
 LOT TAX NUMBERS
 FOR PROPERTY TAX BILLS



MOORE POND

MADISON

KEN'S YAMAHA
 ROUTE 16
 North

15
22 Acc

825'

16
44 Acc

44 Acres
 Acquired by
 SKI & BEACH
 21 JULY 1998

2200'

3

BOSTON & MAINE RR

PUBLIC SERVICE OF NH

CHOCORUA RIVER